



LAKE PARK

HIGH SCHOOL EDUCATIONAL FOUNDATION

ANNUAL REPORT 2019-2020

2019-20 A Perspective!

2018-19 was both a challenging yet productive year for the Lake Park High School Educational Foundation. Challenging because the Foundation had to cancel several recognition and fund-raising events due to the COVID-19 pandemic. Yet it was productive because despite these challenges the Foundation was still able to provide resources for programs and activities to enhance student learning, provide support for teacher initiatives, and continue to provide services to students to achieve its mission of making a difference for all those who call Lake Park “home.”

Contact Us:

Lake Park High School
Educational Foundation
590 South Medinah Road
Roselle, Illinois 60172

Executive Director:

Rebecca Wyatt
rw Wyatt@lphs.org
(630) 295-5264
www.lphs.org/foundation

Stay Connected:

[facebook.com/lpef](https://www.facebook.com/lpef)
[@LPEF](https://twitter.com/LPEF)

MAKE A DONATION

“Being With You For You”

Entering The Next Phase of Service to the Students, Staff, and Members of the Lake Park Community

As noted in last year’s Annual Report, the Foundation celebrated 30 years of dedicated service to the Lake Park community. This year’s COVID-19 pandemic put a great deal of stress on students, teachers, and communities as they sought to navigate school closures, business closures, lifestyle changes, the cancelling of traditional activities and events, and providing virtual learning experiences for students. Nevertheless, throughout 2019-20 the Foundation remained committed to meeting its mission to enhance student learning experiences while supporting the entire Lake Park learning community in its goal to achieve excellence. To guide its efforts, the Foundation has adopted the motto “Being With You For You” for the 2020-21 school year.

In the last 15 years alone, through its fund-raising activities and support of Lake Park faculty, staff, community members, and its business partners, the Foundation has donated over **\$482,500** to support Lake Park High School District 108 projects and programs that directly impact students, teachers, and the Lake Park community.

However, this is only a beginning as the Foundation continues to be actively committed in seeking ways to partner with Lake Park High School.



The Foundation is students and teachers



The Foundation is Service



The Foundation is the Lake Park community

The following pages provide additional information about what the Foundation is doing to make a difference at Lake Park, so please read on.

EDUCATIONAL FOUNDATION BOARD

OFFICERS

David Victor, President
 Karen Probst, Vice-President
 Dean Bladel, Treasurer
 Anne Coppola, Secretary

TRUSTEES

David Anderson
 Brooke Bonta
 Gabi Mintrup
 Todd Mickley
 Ann Nebel
 Lynne Panega
 David Pileski
 Brooke Lavin Robb
 Jim Roberts
 Urvi Shah
 Cara Steetz

Rebecca Wyatt,
 Executive Director

New Foundation Board Members

The Foundation will welcome several new members to its Board beginning with the 2020-21 school year. Superintendent Jeff Feucht will replace Lynn Panega as a Board member, Barb Layer will serve with Cara Steetz as the Board of Education representative, and Tom Piorkowski, a Class of 2006 alum, will replace David Pileski as a Board member. Finally, a junior student will be selected to join the Foundation Board as a student representative when the school year begins.

Supporting Teacher Innovation – Funds For Excellence Grants

Through the Funds for Excellence Grant Program, the Foundation is able to support teachers' efforts to obtain materials, equipment, and classroom resources to implement innovative ideas and instructional approaches that are beyond the means of the regular school district budget. During the 2019-2020 school year, 7 grants were funded for a total of \$11,910. Since its inception, the Foundation has awarded 95 grants for over \$158,900 to support this critical program.

Grants
\$158,900



Forensic Science students examine DNA using special light boxes purchased with a Foundation grant



Through a Foundation grant, poet Adam Gottlieb held a three-day poetry workshop for freshman English students

ABOUT FUNDS FOR EXCELLENCE GRANTS

Expanding Curricular Support – Partnerships

As part of its strategic planning efforts, the Foundation looked for ways to provide a stable source of funding to support major curricular-related projects. To address this need, the Foundation created a partnership program. Initial partnerships were established with the Technology and Engineering Department to support its Vex Robotics program and with the Special Education Department to support its Transition Assistance Program. As part of its partnership initiative, the Foundation will also co-sponsor a robotics tournament in November 2020.

This past school year, the Foundation established a new partnership with the Business Department to provide seed funding for a business INCubator program. Through this innovative program, students will create and fully develop a product or service under the guidance of practicing entrepreneurs and business experts.



Through Foundation support, Lake Park has established a successful Vex Robotics program

ABOUT VEX ROBOTICS



Practicing entrepreneurs will guide students in the INCubator program in developing a viable product.

ABOUT LPHS INCubator

FOUNDATION PROGRAMS

Collaboration - Night of Fine Dining and Theatre

Projects
\$42,000

In the 2004-05 school year, the Foundation began working with the school's Family and Consumer Science and Fine Arts departments to create a Night of Fine Dining and Theatre program. At the program, the East Campus cafeteria is transformed into a magical place where parents and community members can sample from an elegant menu of taste delights prepared by Lake Park's culinary arts students before attending a student drama production. In 2013, a silent auction for event participants was added to the program. Proceeds from the silent auction, which over time has raised over \$42,000, are used to support various Foundation projects.

**NIGHT OF FINE
DINING & THEATRE**



Community members at the Night of Fine Dining prior to attending the night's play, A Christmas Story



Student volunteers at this year's Night of Fine Dining and Theatre

Assisting Those in Need - Emergency Need and Support Fund

Support
\$21,800

In the 2010-11 school year, the Foundation created an Emergency Need and Support Fund to provide support for school-related expenses for students facing financial hardship. In addition to providing free breakfast and lunch coupons for students in need who do not qualify for the federal free/reduced lunch program, the fund assists financially-challenged students with field trip, SAT prep class, and Advanced Placement exam costs. Since its inception, the Foundation has dedicated over \$21,800 to support this program.

EMERGENCY NEED AND SUPPORT FUND

UPCOMING FOUNDATION EVENTS

Mark your calendars to be a part of these exciting events!
Dates will be updated based on COVID-19 status

Robotics Tournament
November 7, 2020

Top Golf Fundraiser
March 2021
Top Golf Schaumburg

Commencement Box Suites
May 21, 2021
Sears Center

Night of Fine Dining & Theatre and Silent Auction
December 11, 2020
East Campus

Spirit of Excellence Dinner
April 20, 2021
Medinah Shriners

FOUNDATION PROGRAMS

2020 SPIRIT OF EXCELLENCE HONOREES

David Anderson
Demi Apostolakos
Chad Berkich
Simran Bhagat
Breeana Contreras
Joey Czaja
Alex De Simone
Joshua Falco
Abbey Frank
Lindsey Garcia
Meagan Gonzalez
Aneesa Goyal
Dylan Hunn
Yomna Ibrahim
Shana Jose
Gracie Jurgensen
Isabelle Kuril
Leah Ludwig
Frank Maturo
Anishi Patel
Isabelle Pradeep
Angelina Saathoff
Haifa Sahouri
Amanda Samaras
Riley Spoczynski
Jennifer Vazquez
Isabella Vitacco

Four individuals were also selected as recipients of the Foundation's **Distinguished Alumni Recognition Award**. These individuals will meet with students throughout the school day and be formally recognized at the Spirit of Excellence program in April 2021.

Dr. Gary Andres (Class of 1973)
Veronica Dillard (Class of 1998)
Robin Kittleson (Class of 1986)
Maureen Zoltek (Class of 2001)

**SUPPORT THE SPIRIT OF
EXCELLENCE**

Recognizing Excellence - Spirit of Excellence Program

In 2008-09, the Lake Park High School Educational Foundation established the Spirit of Excellence awards program to honor excellence at Lake Park High School. In 2020, twenty-seven seniors were recognized for their service, extraordinary effort, achievement, and leadership throughout their high school years. These students were selected because they possess qualities for other students to emulate and have achieved special accomplishments in addition to their academic success while at Lake Park. Each student also had the opportunity to identify a teacher who had a significant influence on their life while at Lake Park. With this year's Spirit of Excellence program cancelled due to COVID-19, each of the student honorees was recognized on the Foundation's website.

In 2020, the Foundation also implemented a new awards program to recognize teachers. Tracey Fink and Jeff Henrikson received the **Lancer Spirit Award** in recognition of their efforts in creating a positive school spirit and culture. Darcie Murray received the **Lancer Humanitarian Award** for her compassion, raising awareness of various issues, and leadership. Jennifer McSweeney received the **Lancer Connection Award** for her work in developing strong relationships with staff and commitment to support students in their academic and personal growth. Julie Bausch and Pia Laudadio received the **Lancer Innovator Award** for their work in pioneering innovative instructional approaches that actively engage student in the learning process. Finally, Dan Colucci and Kristin Harrington received the **Lancer Legacy Award** in recognition of their impact on Lake Park and commitment to teaching and learning throughout their careers.



Spirit of Excellence 2020

Staff Honorees

Connection Award: Jennifer McSweeney



Humanitarian Award: Darcie Murray



Innovator Award: Pia Laudadio and Julie Bausch



Legacy Award: Dan Colucci and Kristin Harrington



Spirit Award: Tracy Fink and Jeff Henrikson



**INDIVIDUALS AND FAMILIES
SPONSORING SCHOLARSHIPS**

Aisling Family
 Altier Family
 Dr. Gary Annunziata
 Barclay Family and Kay Cahill
 Bonavolonta Family
 Joe Cychosz
 Family of Scott Bradley
 Family of Chris Frizzelle and Lake Park Soccer
 Family of Amanda Dombrowski
 Family of Gaylon H. Elliott
 Family of Chris Frizzelle
 Family of Donald C. Lovelace
 Family of Geoff Voigts

**ORGANIZATIONS
SPONSORING SCHOLARSHIPS**

Gene Haas Foundation
 Lake Park Badminton/Tennis and Dorothy Hildebrandt
 Itasca Lions Club
 Lake Park High School Educational Foundation



**Helping Students Achieve Their Dreams -
The Scholarship Program**

Meeting rising college tuition costs has traditionally been a challenge for students and families. Over the years, the Foundation has assisted students and families by awarding over a **quarter million dollars** in scholarships to deserving students. In 2020 alone, the Foundation awarded 33 scholarships totaling over \$27,000 to students based on everything from financial need to academic performance, majors students plan to pursue, leadership, and service to the school and community. The Foundation plans to award an additional \$4,000 in scholarships to students graduating in 2021.



Foundation scholarship recipients along with scholarship donors

The benefit of the Foundation’s scholarship program can best be exemplified by the following 2020 scholarship recipients:

“I want to thank you for making this scholarship possible. I plan on using your generous donation to help cover some of my tuition for the fall semester. My family and I cannot thank you enough knowing that your scholarship will help me pursue my dreams while providing financial relief for my family. Coming from a blue collar family, I’ll be sure to do your scholarship, in the name of your son, justice as I work to achieve my goals through education.”

“As a recipient of the EXCEL scholarship, I would like to offer the Foundation my sincerest thanks. Your help is invaluable and I am incredibly grateful. I plan to pursue a double major in mathematics and physics. My goal is to earn a Ph.D. and do research as either a pure mathematician or a theoretical physicist.”

“I want to thank you for your consideration and generous scholarship. By awarding me this scholarship, you have significantly aided me and my family financially and made it one step closer for me to follow my dreams. This aid will allow me to focus on education and the next step in life while taking care of much of the financial burden that can distract a student. This scholarship inspired me to always be willing to express generosity and to never forget the hard work that is needed to achieve one’s goals.”

ABOUT OUR COLLEGE SCHOLARSHIPS

Being With You For You – Community Connections

In an effort to reach out to alumni, the Foundation annually hosts building tours as part of 50-year reunion activities as well as hosting an Alumni End Zone area at several home football games to provide a dedicated area where alumni from various classes can congregate and reconnect.



Class of 1969 Reunion Tour

Foundation members also continued volunteering at the **Northern Illinois Food Bank**, partnering with the school on its annual **Make a Difference Day**, and working with the Roselle Historical Foundation on its **Flags for Roselle** program. In 2020, Foundation Board members packed 20,710 pounds of food that would provide 17,258 meals for needy families in the area.



Northern Illinois Food Bank Volunteers



Make a Difference Day Volunteers

As a school/community event, the Foundation decided to hold its **2020 Golf Outing** and fund-raising event on March 5 at a Top Golf facility. 77 members of the Lake Park staff and community attended this welcome break from the long winter season and the Foundation was able to raise \$4,870 through corporate and event sponsorships.



Community members enjoy the indoor facilities at Top Golf to “shake off the rust” in their golf swing after a long winter



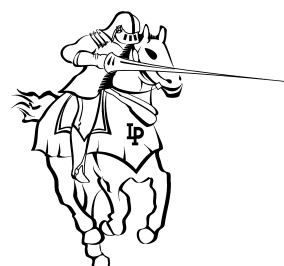
Science Department members past and present and their families engage in friendly competition and conversation

THE FOLLOWING VOLUNTEERS WERE INDISPENSIBLE IN ASSISTING WITH ONE OR MORE OF THIS YEAR’S FOUNDATION EVENTS

“There is nothing stronger than the heart of a volunteer”

- J. Doolittle

Sherri Anderson
 Laura Bladel
 Erin Browski
 Kay Cahill
 Michael Chabalowski
 Grace Collins
 Marjorie Frank
 Lauren Gorey
 John Gouriotis
 Joshua Henry
 Lake Park Art Club
 Lake Park Family & Consumer Science Students
 Lake Park Custodial/ Maintenance Staff
 Lake Park Earth Club
 Lake Park Jazz Ensemble
 Lake Park NHS Students
 Lake Park Student Council
 Lake Park Technology & Engineering Students
 Lake Park Theatre Students
 Dan Lobraco
 Patrice Lovelace
 Dominic Manola
 Frank Matas
 Tracy Mize
 Ernest Morales
 Kim Murphy
 Tim Noverini
 Nancy Oswald
 Dan Probst
 Michele Shank
 Rexanna Stearns
 Hillary Victor
 Paula Winfield
 Jeff Wyatt
 Tiffany Xie
 Lauren Zalon



The Foundation's Impact

The following testimonials are a snapshot of how the Lake Park Foundation has had a positive impact on Lake Park's students and teachers.

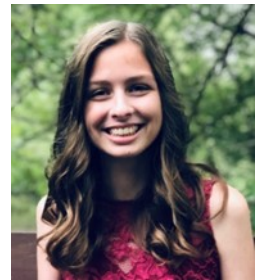
Gabrielle Mintrup currently is one of the student representatives on the Foundation Board. She also developed a video highlighting the Foundation's impact on students and teachers at Lake Park. The video can be viewed on the Foundation's website at www.lphs.org/foundation.

Q. Why did you want to become involved with the Foundation?

A. I chose to become involved in the Foundation because I saw how much they were helping students and teachers and making unique experiences possible, and I wanted to be a part of that.

Q. As a student leader, what have you learned and how have you benefited from your experience as a Foundation Board member?

A. This was my first experience on a board with mostly adults making pretty high level decisions, so it was very interesting to learn how the process works, and I was able to take what I learned to another board that I am on at my church where everyone else is adults. It has taught me to not be afraid to share my thoughts and ideas because the members of the board are always willing to listen.



Dan Colucci is a business education teacher and one of the two teachers in the department who is coordinating the new Business INCubator program.



Q. How has the Foundation made a difference for the students and teachers at Lake Park?

A. The Lake Park Educational Foundation provides a very much needed service to students and teachers by supporting both financially to provide opportunities that wouldn't normally be possible. Without the LPEF's support, the INCubator program could not have been offered. I am very appreciative of the generous donations collected by the Lake Park Educational Foundation.

Q. Why is the Foundation an important part of the Lake Park educational community?

A. The Foundation is an important part of the Lake Park educational community because they work hard to provide additional academic supports that would normally not be possible through the high school's budget.

Christopher Benak is a special education teacher and the Special Education department leader as well as a consistent contributor to the Foundation.

Q. How has the Foundation made a difference for the Special Education Department and its students over the years?

A. Over the years, the Special Education department's partnership with the Lake Park Educational Foundation has allowed students to enhance their experiences while at Lake Park. Our Transition Assistance Program (TAP) has partnered with the Foundation to create the LP Gateways program which creates opportunities for special education students to participate in a continuum of coordinated transition activities that support their post-secondary goals. Our Pathways Program established a partnership with the Foundation to offer a coffee shop in which Pathways students could work on the vocational skills associated with operating the coffee shop. In addition, our students have been awarded scholarships to participate in extracurricular programs as well as being provided with funds from the Emergency Need and Support Fund to purchase academic-related items if they face economic hardship.



Q. Why is it important to support the Foundation?

A. Through donors' support, the Lake Park Educational Foundation's mission is to provide the district with resources for assistance, enhancement, and advancement. Lake Park students, departments, and programs benefit directly from these donations and contributions. Supporting the Foundation provides students with increased opportunities whether it is interest-based or a means to remove financial burdens. Staff members also have access to additional resources to support continued innovation as we work to best prepare all students for an ever-changing post-secondary world.

Kara Roll is a science teacher and a consistent contributor to the Foundation.

Q. How has the Foundation made a difference for the students and teachers at Lake Park High School?

A. The LPEF has made so many positive contributions to the staff and students of this high school. From scholarships to Spirit of Excellence recognition, from classroom grants to partnerships with Robotics, the LPEF is committed to creating an environment that assists students in both achieving academic and extracurricular success. The LPEF does not target one specific type of student – it strives to enrich the experiences of children from all walks of life and with all levels of ability. It is for these reasons that the LPEF is an integral part of Lake Park High School.



Q. Why have you been such a strong supporter of the Foundation over the years?

A. I have chosen to support the Foundation over the years because of its dedication to support Lake Park in turning out the most well-rounded and prepared of students, which leads to their being successful and productive members of society.

WAYS YOU CAN HELP THE FOUNDATION

The Lake Park Educational Foundation relies on donations to fund its various programs to support excellence at Lake Park High School. As a 501(c)(3) non-profit organization, all donations to the Foundation are tax deductible and are acknowledged with a letter for tax purposes. Your gift in any amount helps the Foundation achieve its mission of making a difference for Lake Park students and staff members.

**CLICK HERE TO MAKE A
DONATION TO THE
FOUNDATION**

Make a Contribution on our secure website at www.lphs.org/foundation or send a check to the Lake Park Educational Foundation, Lake Park High School, 590 South Medinah Road, Roselle, Illinois 60172. You may specify the program to which you wish to donate. Also, please let us know if your company provides a matching gift for your donation.

**CLICK HERE TO VIEW
THE ANNUAL
SPONSORSHIP PACKET**

Become an Annual Sponsor and enable your company to support the work of the Foundation while receiving recognition at all Foundation events and publications. Companies may donate at various sponsorship levels. Contact Rebecca Wyatt at rw Wyatt@lphs.org or at (630) 295-5264 for details.

**VOLUNTEER
INFORMATION**

Volunteering to assist the Foundation with one or more of its various programs. Volunteers are always welcome and it is a great way to determine if working with the Foundation is something you would like to do on a more regular basis.

Special Shoutout to Our Legacy Circle Contributors

The following individuals, groups, and businesses have contributed over \$2,500 to the Lake Park Foundation since 2014.

Dr. Gary Annunziata
Arcon and Associates
The Barclay Family and Kay Cahill
The Bonavolonta Family
Olav Bradley
Catering with Elegance
Carol Christophe
Brett Conradt
Joe Cychosz
The Mary Dombrowski Family
Electri-Flex
The Elliott Family
Frain Industries
Gene Haas Foundation
Kristin Harrington
Dorothy Hildebrandt
Itasca Bank and Trust
Itasca Lions Club
Jay Ivory
Tom Kaberna
Kohl's Department Stores
The Lake Park Education Association
Kathy Lovelace-Birk
Eric Madiar
Dominic Manola
Frank Matas
The McCrum Family
Tracy Mize
Dr. Mary O'Reilly-Kehoe
Dr. Lynn Panega
Printing Plus Roselle
Ramcel Precision Stamping – Rocco Palmi
John and Karen Regan
Robbins Schwartz
Jim Roberts
Roselle Historical Foundation
Dr. David and Sue Ann Smith
Sodexo Quality Life Services
Wickstrom Auto Group



Increasing Support Through Business Sponsorships

In 2013-14 the Foundation began seeking the support of business partners through an annual sponsorship program. Additionally, several businesses provided support for the Foundation's annual golf outing. The generosity of its business partners has been critical in helping the Foundation provide quality programs, expand its support efforts, and begin new initiatives to better serve the students, teachers, and staff members at Lake Park High School.

SILVER SPONSOR— \$3,000



308 West Irving Park Road, Itasca, Illinois 60143
One East Irving Park Road, Roselle, Illinois 60172
Phone: 630-773-0350 www.itascabank.com Member FDIC

BLUE SPONSOR— \$1,000



WHITE SPONSOR— \$500



2020 Golf Outing Sponsors: Ramcel Engineering, Robbins Schwartz, Avanti Engineering, Comfort Services, Imagetec Athletico, Trophies by George, Relish Catering

Businesses, Individuals, and Companies Making Donations to Support Various Foundation Programs/Events

- | | | |
|-------------------------------|--|---------------------------|
| AMC Movie Theaters | Lake Park Family & Consumer Science Department | Jim Roberts |
| Anyways | Lake Park High School | Roselle Park District |
| Athletico | Lake Park Math Department | Sue Rothchild |
| Dean & Laura Bladel | Lake Park P.E. Department | Schaumburg Park District |
| Bloomington Golf Club | Lake Park Science Department | Schaumburg Golf Club |
| Bloomington Park District | Lake Park Special Education Department | Shedd Aquarium |
| Tina Bojan | Lake Park Theatre Program | Target Stores |
| Checkers Pancake House | Lake Park Woods Classes | Tasting deVine - Wheaton |
| Chicago Bears | Lou Malnati's Restaurant | That's Caring |
| Chicago Blackhawks | Lynfred Winery | Two Brothers Brewing |
| Chicago Cubs | Mandurian Bistro | Tree-Guys Pizza Pub |
| Chicago White Sox | Todd Mickley | Trophies By George |
| Chicago Wolves | MOD Pizza | Village of Bloomingdale |
| Church Street Brewing | Mr. A's Restaurant | Village of Roselle |
| Comfort Services | Museum of Science & Industry | Village Links, Glen Ellyn |
| Anne Coppola | Olive Garden | Dave and Claudia Victor |
| Dino's Cafe | Painted Penguin | Becky Wyatt |
| Field Museum Chicago | Pilot Pete's | Paula Winfield |
| Fire & Wine | Pinot's Palette | |
| Friendly Ford | Pollyanna Brewing Company | |
| Imagetec | Karen Probst | |
| Itasca Country Club | Ramcel Engineering | |
| John & Tony's Ristorante | Robbins Schwartz | |
| Kane County Cougars | Red Robin, Bloomingdale | |
| La Campana Mexican Restaurant | Relish Catering | |

INDIVIDUAL DONORS

The following individuals donated to support various Foundation programs. It is through the generosity of these individuals that the Foundation was able to do the things it does in support of Lake Park High School's students, faculty, and community.

STUDENTS, PARENTS, FRIENDS, COMMUNITY MEMBERS – \$19,095

Kavitha Achanta	Victoria Ciaccio	Horea Ilea	Susan Pearson	Charles Sprandel
M. Aggarwal	Comfort Services	Aisha Imran	Valentina Petrova	Sternberg Lighting
Sophia Ahmed	Marc & Alba Colavitti	Imagetec	Tina Piemonte	VivianThorne
Angelica Ahrens	Brett Conradt	Elizabeth Kaige	Lee & Cynthia Pietrowski	Julie Thomas
Amazon Smile	Michael Cozzi	Colleen Koch	Karen Probst	Brian Trinco
Mary Arey	Matthew Deimling	Kohl's Department Stores	Joseph Provenzano	Trophies By George
Athletico	Ann Kelly Deterding	Ed Kulik	Ramcel Precision Stamping	Roxanna Valladares
Avanti Engineering	Denis Eischen	Lake Park Boys/Girls Tennis	Matthew Randazzo	Robert Weisheit
Jacqueline Barbanente	Christine Essary	Mike Latoria	Ita Reilly	Michael Winfield
Lee Bielawski	Forest Awards & Engraving	Priscilla Martyka	Relish Catering	Natalie Wolff
Kristina Bojan	Elsa Garcia	Jerry & Kathy Miller	Robbins Schwartz	Lauren Woods
Pamela Bonta	Ryan & Janice Gatbunton	Hong Sok Moon	Kristina Romero	Debra Zegger
Magdalena Bosak	Dawn Griffin	James Morikuni	Roselle Historical Foundation	Danuta Zeranska
Brian Bostelman	Guenther Gallery & Design	Shamsa Naqvi	Anna Rozek	
Toni Buhrke	Claudia Hansen	National Christian	Anna Sadlowski	
Denise Burgess	Marla Hatfield	Foundation	Adrianna Sapien	
David Carzoli	Jamie Helm	Jenean Notini	Sedexo	
Parinda Choksi	Dorothy Hildebrandt	Michele O'Neill	Vaishali Shah	
Wasifa Chowdhury	Raymond Horn	Rocco Palmi	Debra Smith	

LAKE PARK FACULTY AND STAFF MEMBERS - \$13,240

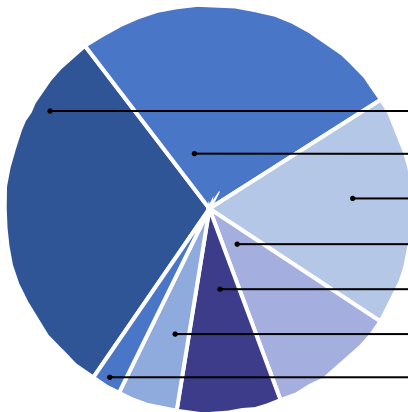
Aimee Allison	Kristin Deegan	Tom Kaberna	Jeff O'Connell	Hannah Spoolstra
Ronald Alm	Demetra Del Fiacco	Pete Kolzow	Elizabeth Olinski	Diane Stratton
Sherri Anderson	Karen Fitzer	Leslie Little	Nancy Oswald	Matthew Sullivan
Clint Anticevich	Tim Gard	Kathy Lovelace-Birk	Lynn Panega	Jeanne Tasch
Ebony Baker	Margaret Gawrych	Leah MacNamara	Tony Parrillo	Joe Tita
Melissa Barger	Lauren Gorey	Dominic Manola	Christian Pawlak	Shanon Tumpane
Julie Bausch	Tommy Gulo	Frank Matas	Nadia Pena	Katherine Weber
Kurt Becker	Katie Hamann	Ashley McIntyre	John Regan	Kristina Weller
Chris Benak	Benjamin Hare	Alanda Mehic	Karen Regan	Paula Williams
Erin Bessey	Kristin Harrington	Todd Mickley	Jim Roberts	Lauren Wozniak
Benjamin Bishop	Therese Hennigan	Andrea Miller	Kara Roll	Rebecca Wyatt
Taylor Chester	Jeff Henrikson	Julie Mirandola	Andrew Rupnick	Joel Zedrow
Lisa Ciccica	Benjamin Hussey	Tracy Mize	Candice Sagliano	Virginia Zeman
Dan Colucci	Jay Ivory	John Nellesen	Jeff Sichz	
Anne Coppola	GINNA JARRETT	Jim Nelson	Grace Sievers	

LAKE PARK RETIREES - \$3,395

Anonymous	Pat Buchenot	Joyce Keil	Beverly Mazola-Panagiotaros	Joyce & Joe Serauskas
Jim Benzin	Kay Cahill	Barb Laba	Carol Pelletier	Barbara Smith
Jack & Sandy Bils	Glenn & Barbara Carson	Bill Lange	Pat Philbin	David & Sue Ann Smith
Dean Bladel	Judy D'Amour	Gwen McNamara	Tom Rucks	David & Claudia Victor
Carol Blanchard	Meribeth Dunsmoor	Sandra & John Menze	James & Debra Rupnick	Deb Vogel
Jerry Blew	Steve & Marsha Einhorn	Dan & Pat Miller	Linda Schabelski	Fran Walthouse
Harvey & Nancy Braus	Mary Gibson	Larry & Mary Mings	Janet & Richard Scoles	Jerry & Sandy Wiseman
Lucy Brinka	Tom & C.R. Hadac	Dr. Mary O'Reilly-Kehoe	Diane Semro	

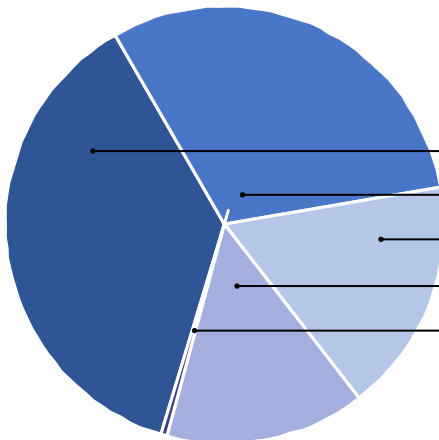
Financial Picture – 2019-2020

The Lake Park Foundation relies on various revenue sources to fund the programs it supports. Following is a summary of these revenue sources and expenses for 2019-2020.



Revenue - \$72,503

Event and Other Revenue	\$21,767
Parent/Friends Donations	\$19,095
Faculty/Staff Donations	\$13,240
Scholarships	\$7,300
Annual Sponsorships	\$6,000
Retiree Donations	\$3,395
Interest	\$1,706



Expenses - \$72,630

General Expenses	\$26,856
Scholarships	\$22,250
Grants and Partnerships	\$12,550
Programs and Events	\$10,658
Emergency Support Fund	\$316

2020 Ending Balance — All Funds: \$173,144

View this Report Online

An electronic version of this Annual Report is available on the Foundation’s website at www.lphs.org/foundation. On the left-side drop down menu of the Foundation’s home page, “click” on Accomplishments and you will find the Annual Report links. The electronic version of the Annual Report has active buttons to provide additional information cited in the Annual Report.



**Lake Park High School
Educational Foundation**

590 South Medinah Road
Roselle, Illinois 60172
(630) 295-5264

www.lphs.org/foundation

*A Special Thank You to:
Mark Boroughf of Printing Plus, Roselle, for Donating the Printing of the Annual Report
Todd Mickley, Foundation Board Member, for the Annual Report's Graphic Design*